



BATTLAX HYPERSPORT S23





BATTLAX HYPERSPORT S23

The **BATTLAX HYPERSPORT S23** allows you to experience the full extent of the ever-increasing power and performance of modern-day sport bikes on the road.

The brand-new edge compound allows for impressive feedback and cornering performance at high lean angle.

An updated pattern, incorporating the **PULSE GROOVE**, contributes to the tyre's impressive wet weather performance.





BATTLAX HYPERSPORT ~~S22~~ S23

Product concept

Improving in all aspects while also setting the tone in the BATTLAX HYPERSPORT S22 with incredible cornering grip at high lean angle.

Development methodology

- Implementation of new compound in the front and rear
- New pattern design with updated land-sea ratio and optimised pattern stiffness
- Addition of PULSE GROOVE to the rear tyre



BATTLAX HYPERSPORT S23, the ultimate hypersport tyre

RACE	RACING BATTLAX V02	RACING BATTLAX W01	BATTLAX RACING R11	BATTLAX CLASSIC RACING CR11
HYPERSPORT	BATTLAX RACING STREET RS11	BATTLAX HYPERSPORT S23	BATTLAX HYPERSPORT S22	BATTLAX HYPERSPORT S21
SPORT TOURING	BATTLAX SPORT TOURING T32	BATTLAX SPORT TOURING T31	BATTLAX SPORT TOURING BT-023	BATTLAX SPORT TOURING BT46
CUSTOM	BATTLECRUISE H50		EXEDRA MAX	
ADVENTURE	BATTLAX ADVENTURE A41	BATTLAX ADVENTURE TRAIL AT41	BATTLAX ADVENTURECROSS AX41	BATTLAX ADVENTURECROSS SCRAMBLER AX41B
OFF-ROAD	BATTLECROSS E50	BATTLECROSS E50 EXTREME	BATTLECROSS X10 X20 X31 X40	
SCOOTER	BATTLAX SCOOTER SC2	BATTLAX SCOOTER SC2 Rain	BATTLAX SC	

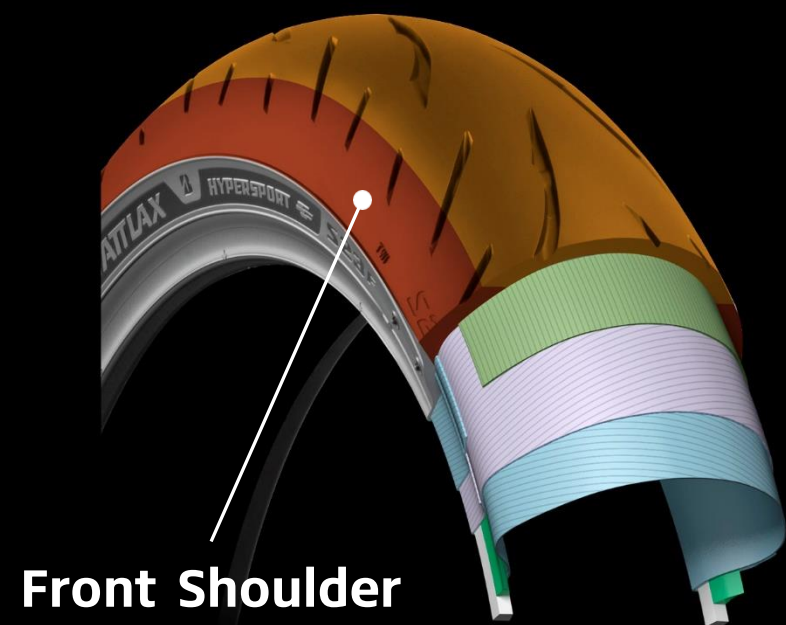




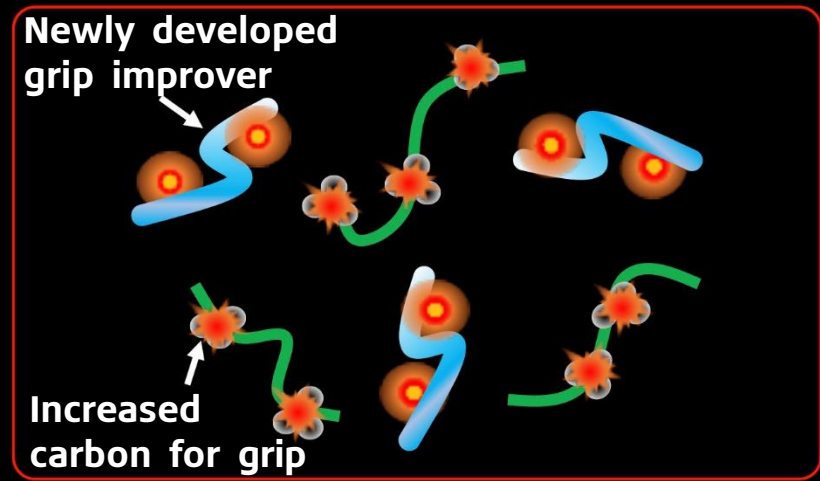
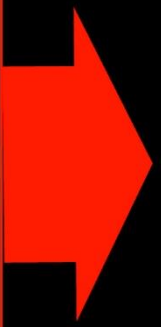
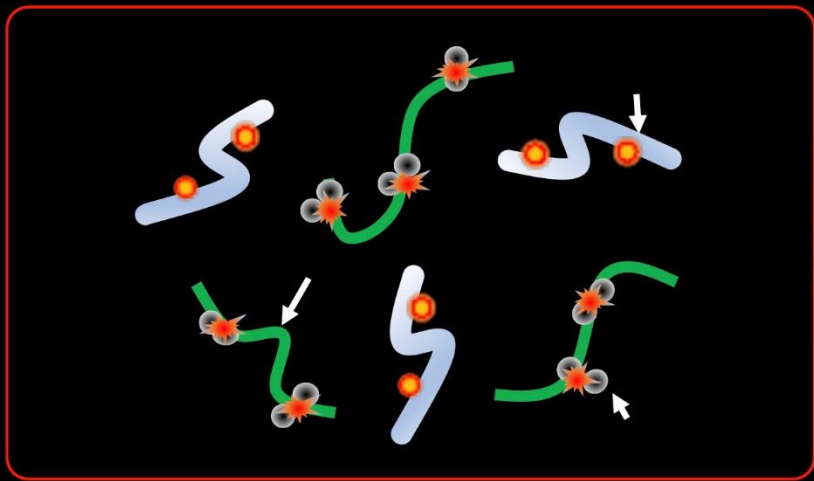
Compound & Construction



- New compound for front shoulder & rear edge with optimised resin components to enhance grip characteristics.

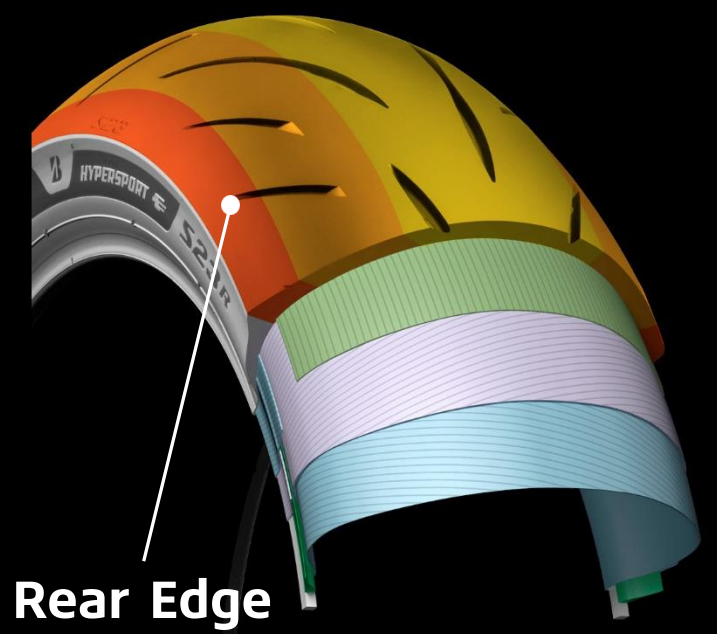


Front Shoulder



*Image

- Grip improver is a material that improves grip by making it easier to follow the road surface.
- Carbon reinforces the spring-like polymer, preventing the polymer from shrinking and by consequence losing grip.

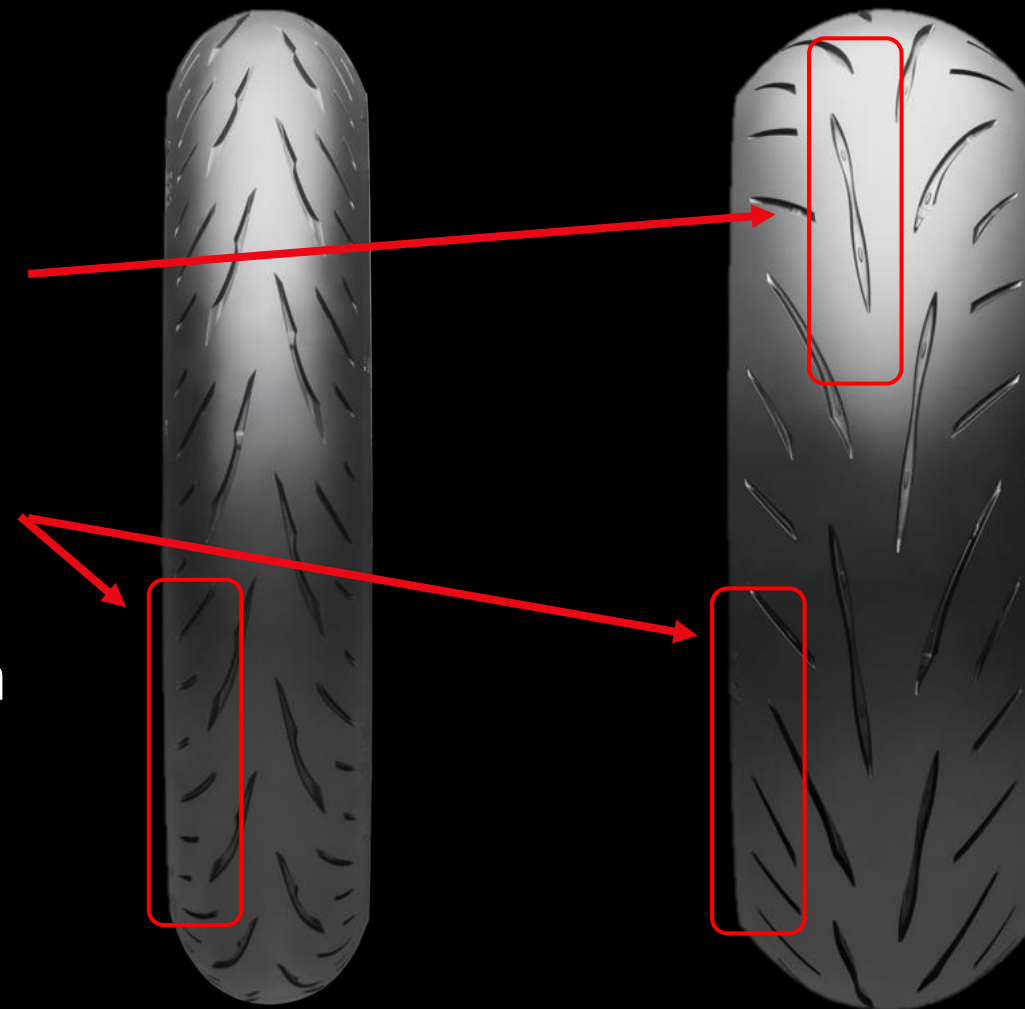


Rear Edge



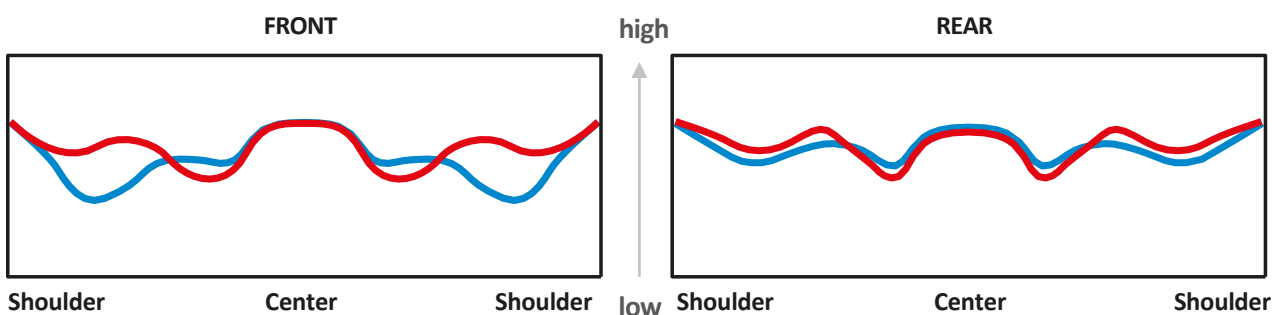
Pattern design

- New pattern design, including PULSE GROOVE in the rear for better wet performance
- Optimised land/sea ratio in the shoulder area and pattern stiffness
 - ✓ In the front for DRY handling and stability in DRY and WET
 - ✓ In the rear for traction improvement



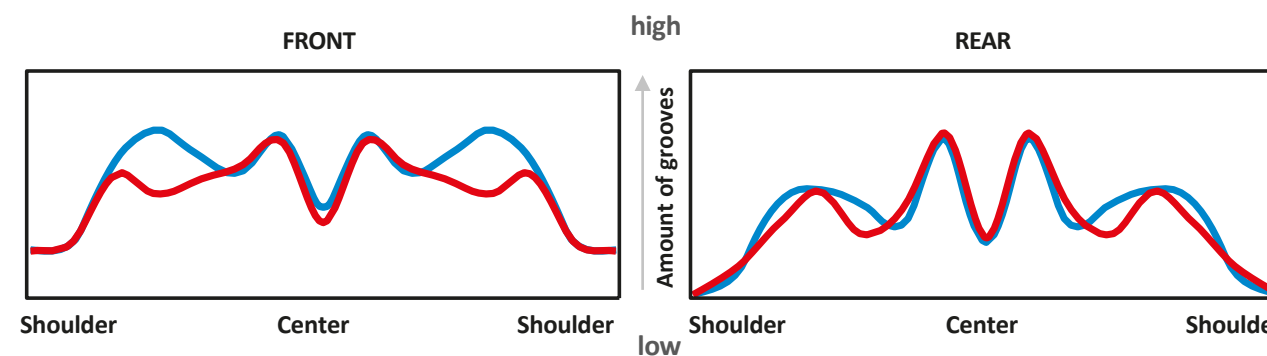
Pattern Stiffness

BATLAX
HYPERSPORT S23
BATLAX
HYPERSPORT S22



Land-Sea ratio

BATLAX
HYPERSPORT S23
BATLAX
HYPERSPORT S22





PULSE GROOVE

Straight Groove
Concentrating waterflow in the center of the groove
Waterflow speed is variable

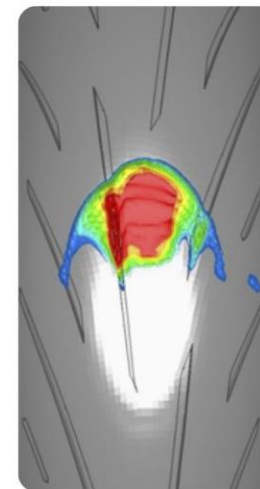
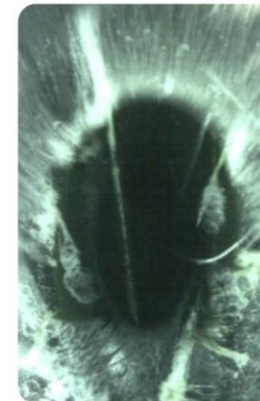
Pulse-shaped groove and deflector optimizes and speeds up waterflow

PULSE GROOVE

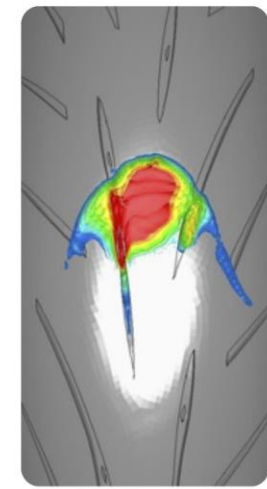
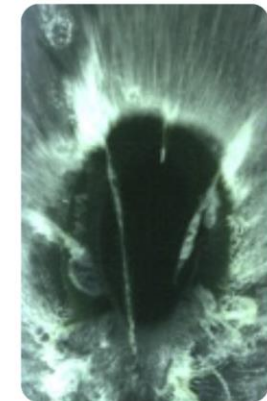
- Pulse-shaped groove and deflector optimizes water flow
 - Improved water drainage and better grip and adhesion in wet conditions
- * Drainage Resistance Index = Level of water pressure
The higher the water pressure, the more slippery – because there is water between the tyre and the road surface.

Drainage Resistance Index*
7% improved

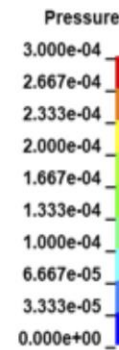
BATTLAX
HYPERSPORT
S22
REAR



BATTLAX
HYPERSPORT
S23
REAR



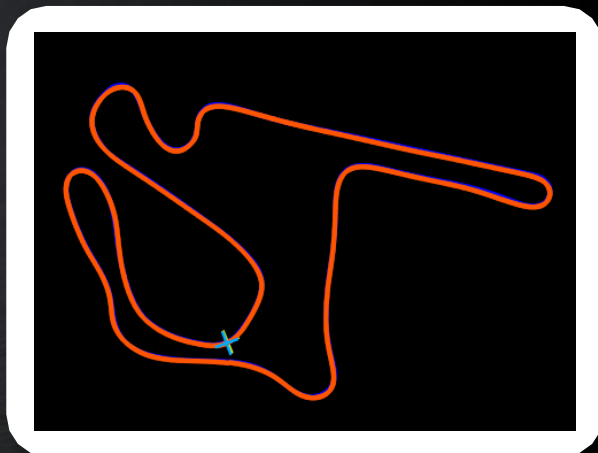
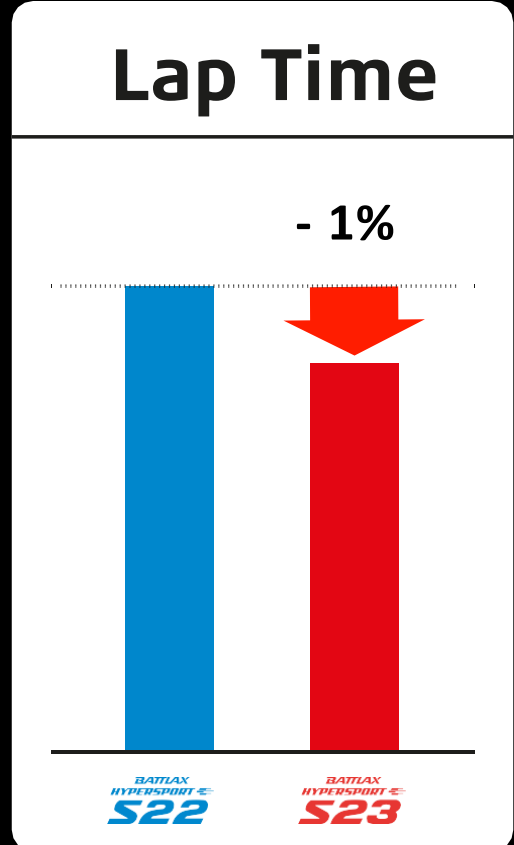
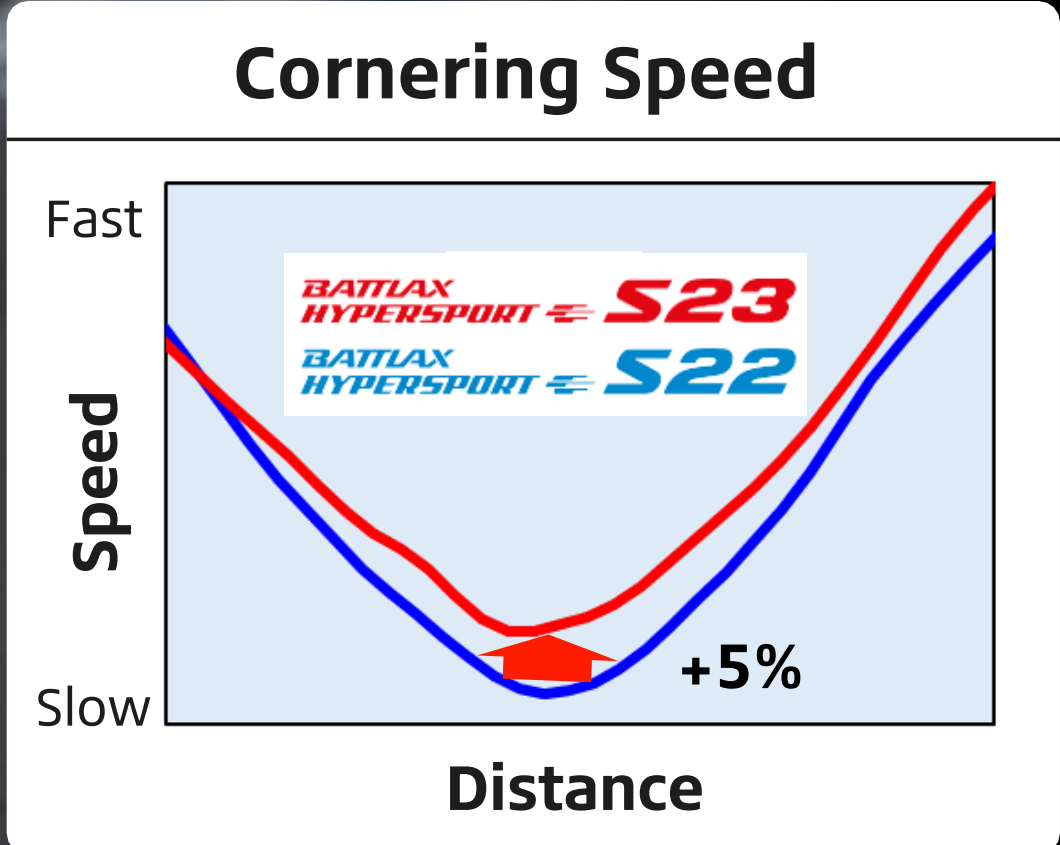
Rotation





DRY Performance Improvement

- Increased cornering speed by 5%
- 1% faster DRY lap time

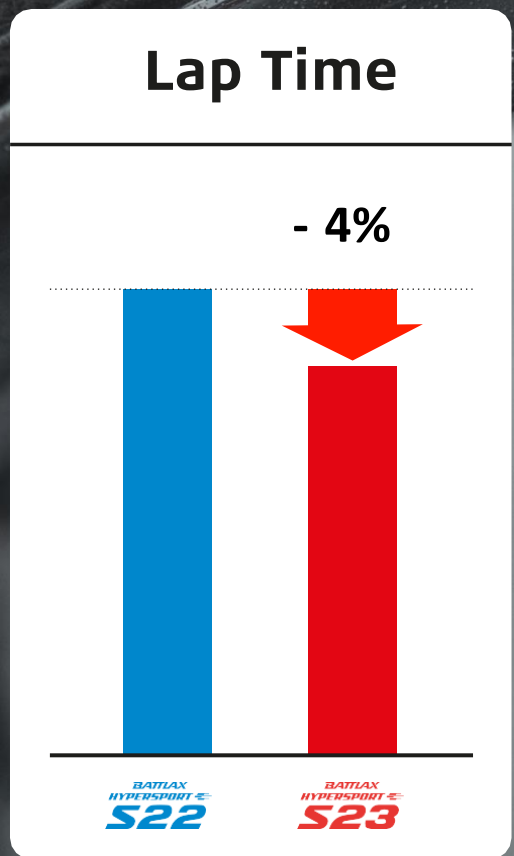
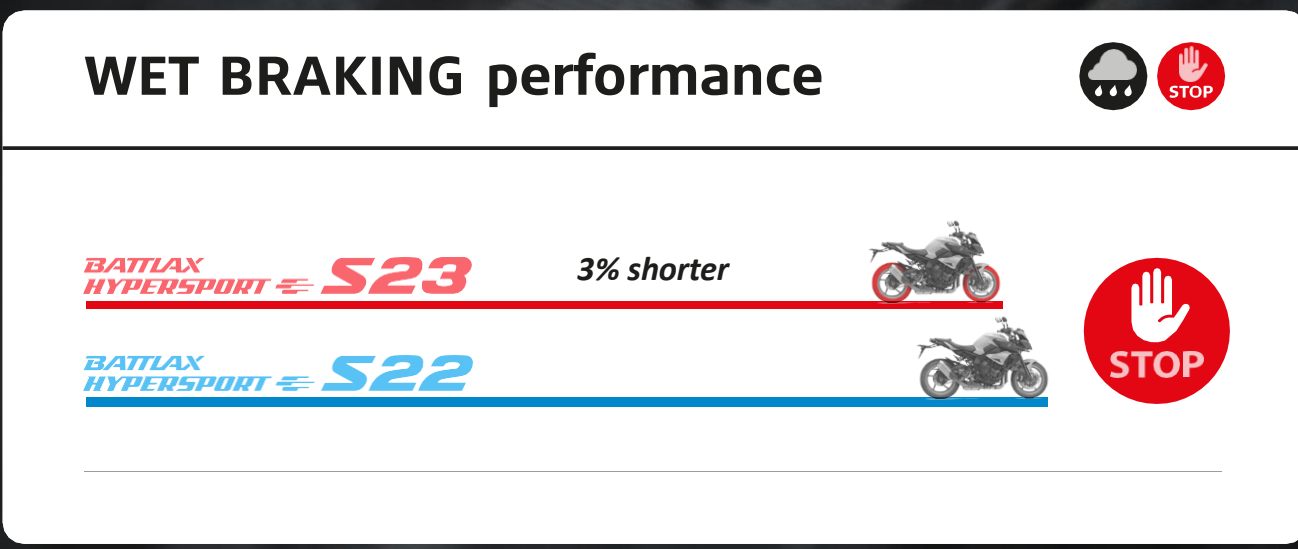
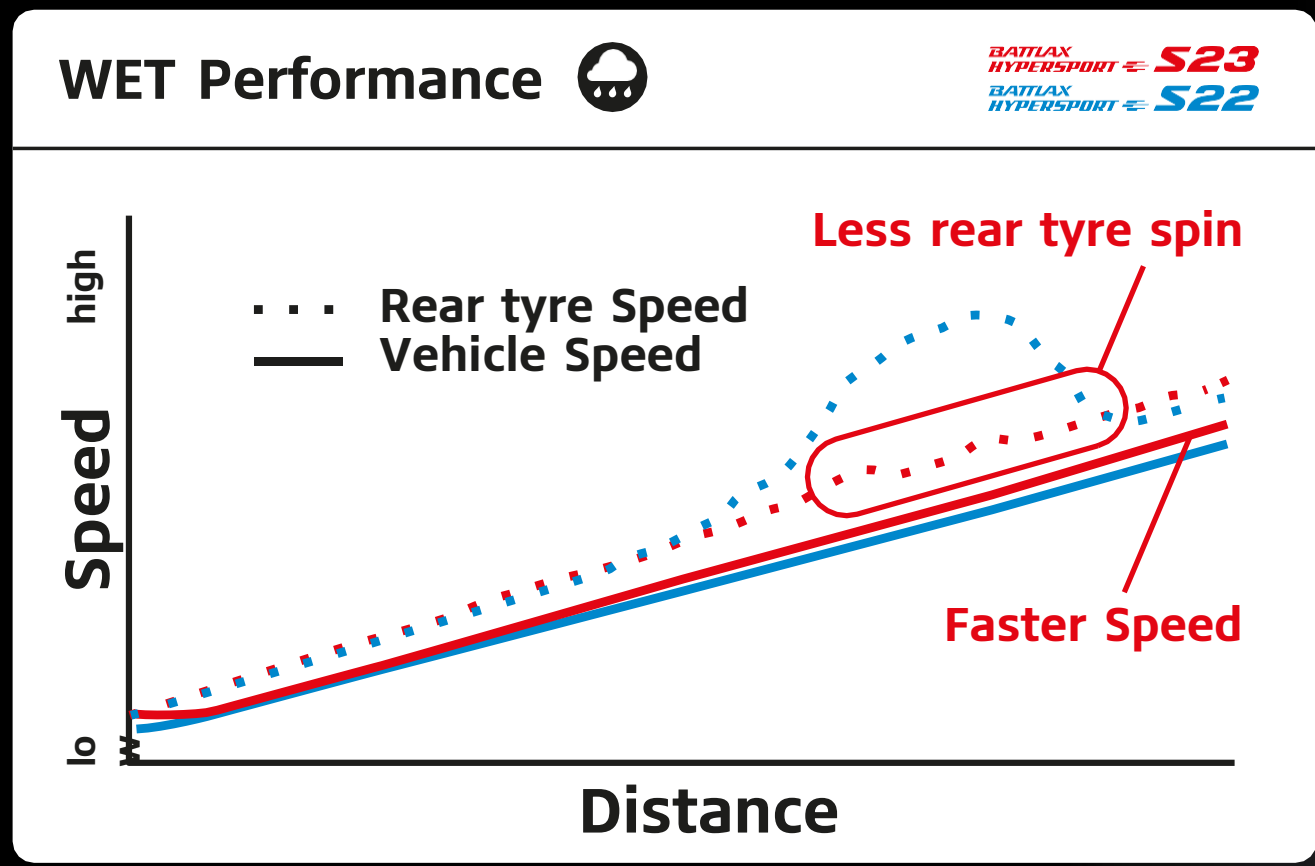


Venue: Andaluçia Circuit
 Vehicle: BMW S1000RR
 Size: Front 120/70ZR17 M/C
 Rear 190/55ZR17 M/C



WET Performance Improvement

- Traction improved
- 3% shorter WET braking distance
- 4% faster WET lap time



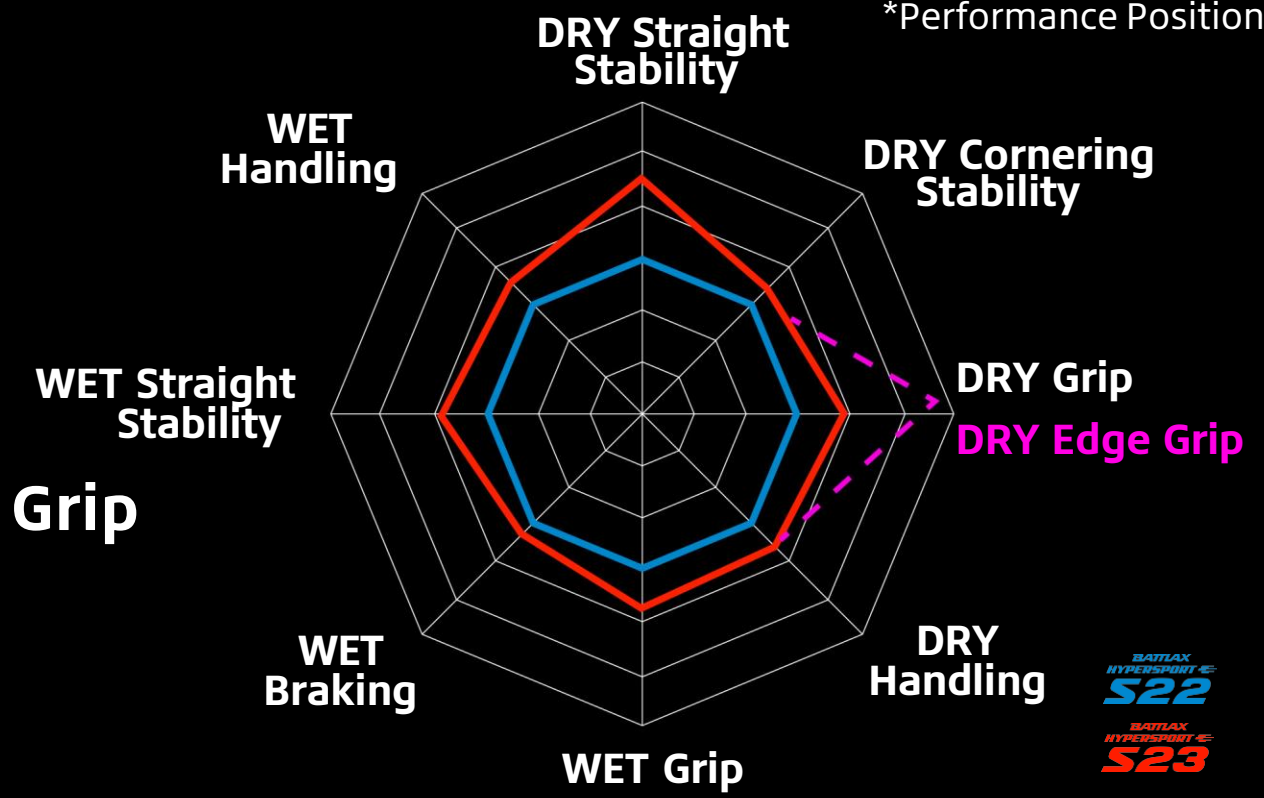
Venue: Bridgestone Proving Ground
 Vehicle: BMW S1000RR
 Size: Front 120/70ZR17 M/C / Rear 190/55ZR17 M/C



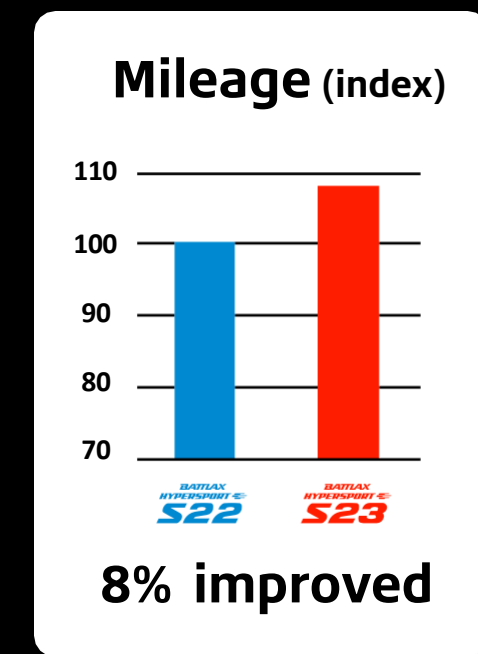
Summary

- The new reference hypersport tyre
- Performance increase in all areas, without compromises
- Even more suited for sporty riding due to high Edge Grip
- Better overall WET performance, including
 - Increased WET grip & handling
 - Shorter braking distance in WET conditions
- 8% mileage increase

*Performance Position Image



Venue: Bridgestone Proving Ground
 AUTOPOLICE
 Vehicle: BMW S1000RR/ YAMAHA MT-10
 Size: Front 120/70ZR17 / Rear 190/55ZR17



Venue: Sardegna, Italy
 Vehicle: Kawasaki Z1000SX
 Size: Front 120/70ZR17 / Rear 190/55ZR17





Size Line-up

Market Availability : Feb 2024~

SIZE	LI/SS	TT/TL
FRONT		
120/70 ZR 17 M/C	(58W)	TL
REAR		
160/60 ZR 17 M/C	(69W)	TL
180/55 ZR 17 M/C	(73W)	TL
190/50 ZR 17 M/C	(73W)	TL
190/55 ZR 17 M/C	(75W)	TL
200/55 ZR 17 M/C	(78W)	TL



